

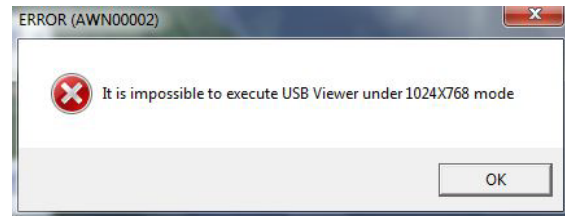
# Samsung 850DX USB Viewer Application

## Software Settings

- Remember, plug in your tan USB cable from the doc cam to your laptop USB port
- From your Taskbar launch the **SDP850DX USB Viewer** Application

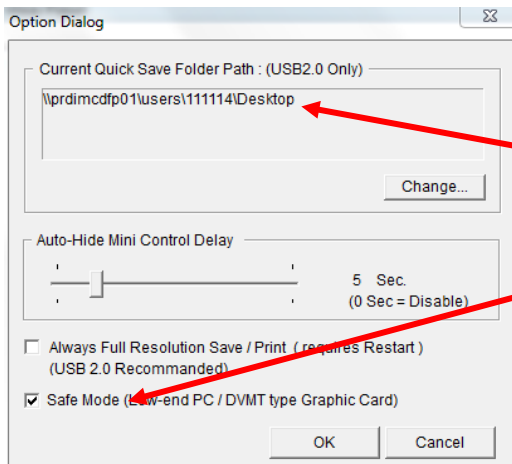


A **confusing dialog box** may appear as shown on the right. You will now need to change your resolution to 1024 x 768 as shown earlier. *If by chance this dialog box doesn't appear, it will eventually and you will need to change to 1024 x 768 when it does.*



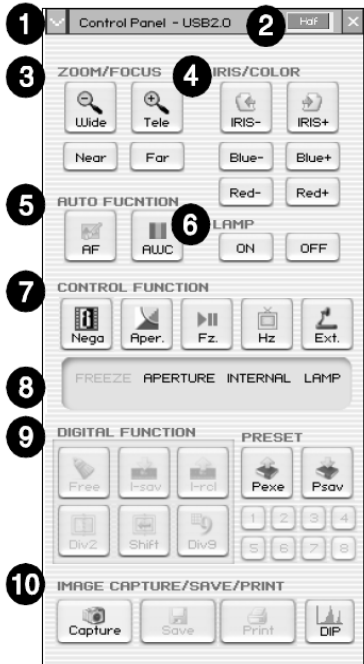
### View Panel

1. **View Area** – You can see the images presented from the document camera
2. **Resolution Sizes** – Allows you to select the input size of your digital still image
3. **Quick (Q-Save)** – Saves images instantly
4. **Option** – Directly below is the set up preferences for where to save the Quick Save (Q-Save) image and resolution of the image.



- 4a. Change Current Quick Save Folder Path - to **Desktop**
- 4b. **Check Safe Mode Safe** – Saves images at 512 x 384. If you check Always Full Resolution Save/Print – saves images at 1024x768

## Remote Control Panel



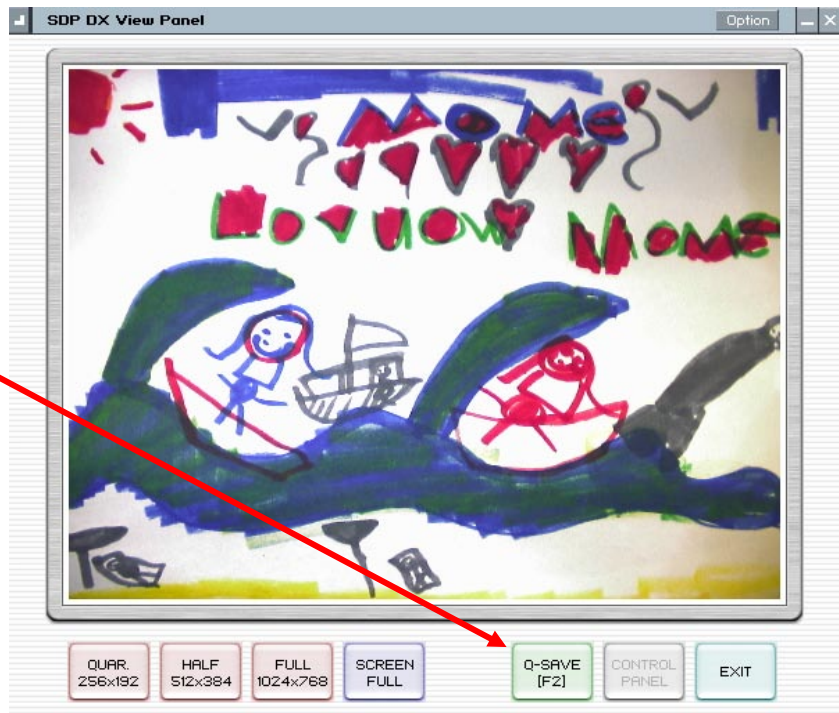
- 1 - Control Panel → Mini Control Panel switch button
- 2 - HALF button → Appears when you call Control Panel in the FULL Mode, Returns the view to normal window size. (Hotkey = [Esc] key)
- 3 - **Wide/Tele : Zoom function** Near/Far : Adjusts focus
- 4 - IRIS+/- Adjusts the brightness of the image on the screen.  
Blue +/- Adjusts the blue color / Red +/- : Adjusts the red color.
- 5 - AF: Adjusts auto focus / **AWC: Adjusts auto color**
- 6 - **Lamp ON/OFF : Turns the lamp On/Off.**
- 7 - Nega.(Negative): Toggles the image from positive to negative.  
Aper. (Aperture): Toggles between Text & Image Modes.  
Fz. (Freeze): Freeze image or live image on document camera  
Hz: Switches frequency of the 850DX between 60Hz and 75Hz.  
**Ext. (External): Use this to select internal(doc cam) or external (computer) on unit.**
- 8 - Shows the current status of the presenter and also shows the number selected at PRESET status.
- 9 – PRESET (Psav, Pexe) button inter-operates with the number button(1~8). (Refer to Samsung Digital Presenter User’s Manual) Allow to save custom user setting values or to activate the preset user setting. After pressing Psav / Pexe button press number keys from 1 through 4 within 5 seconds.
- 10 - **IMAGE CAPTURE/SAVE/PRINT.** When the desired image is displayed in the View Panel, click Capture button. When capturing is complete, the Release button, Save button and Print button are viewable again.

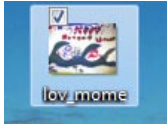
## Capture a Digital Still Picture with Quick Save

- Remember, plug in your tan USB cable from the doc cam to your laptop USB port.
- From your Taskbar launch the USB View Application.



1. Position your document or in this example, a student’s art work under the doc cam.
2. After making the proper lighting, zoom in/out and focusing adjustments; take a picture by simply pressing the **Q-Save button** on the USB Viewer software.





3. Based on your Option settings detailed earlier, your image was **instantly saved to your computer desktop**.
4. If you like, you can rename the picture file as shown here and move into a picture folder for example.

5. The image can now also be dragged and dropped from the computer desktop into many different types of applications like an ActivInspire flipchart (shown here) or Microsoft Word.

